



Can Romi

3 Bedrooms · 1 Bathroom · San Carlos







ATENCIÓN
Paseo de la Playa
12:00 - 18:00







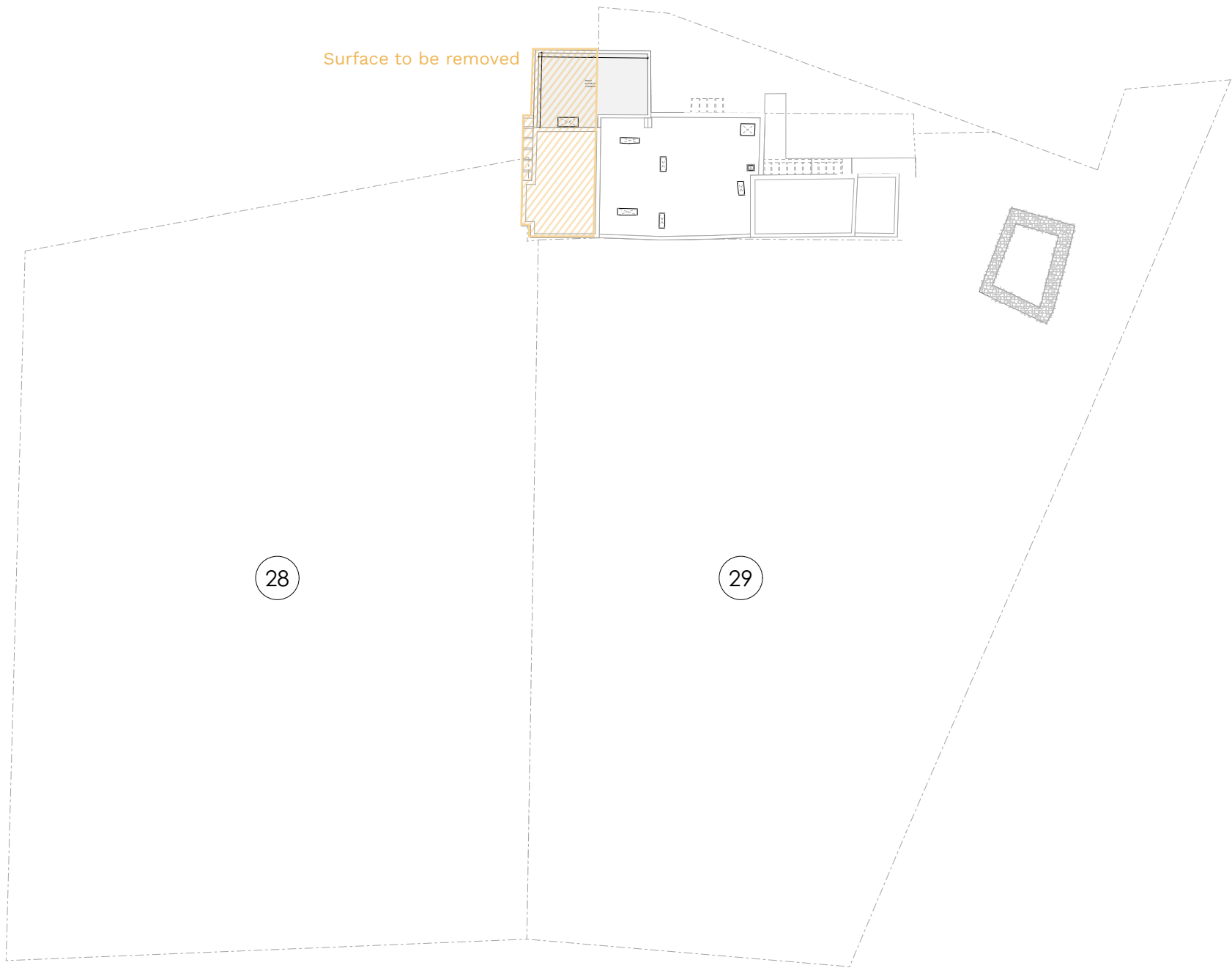






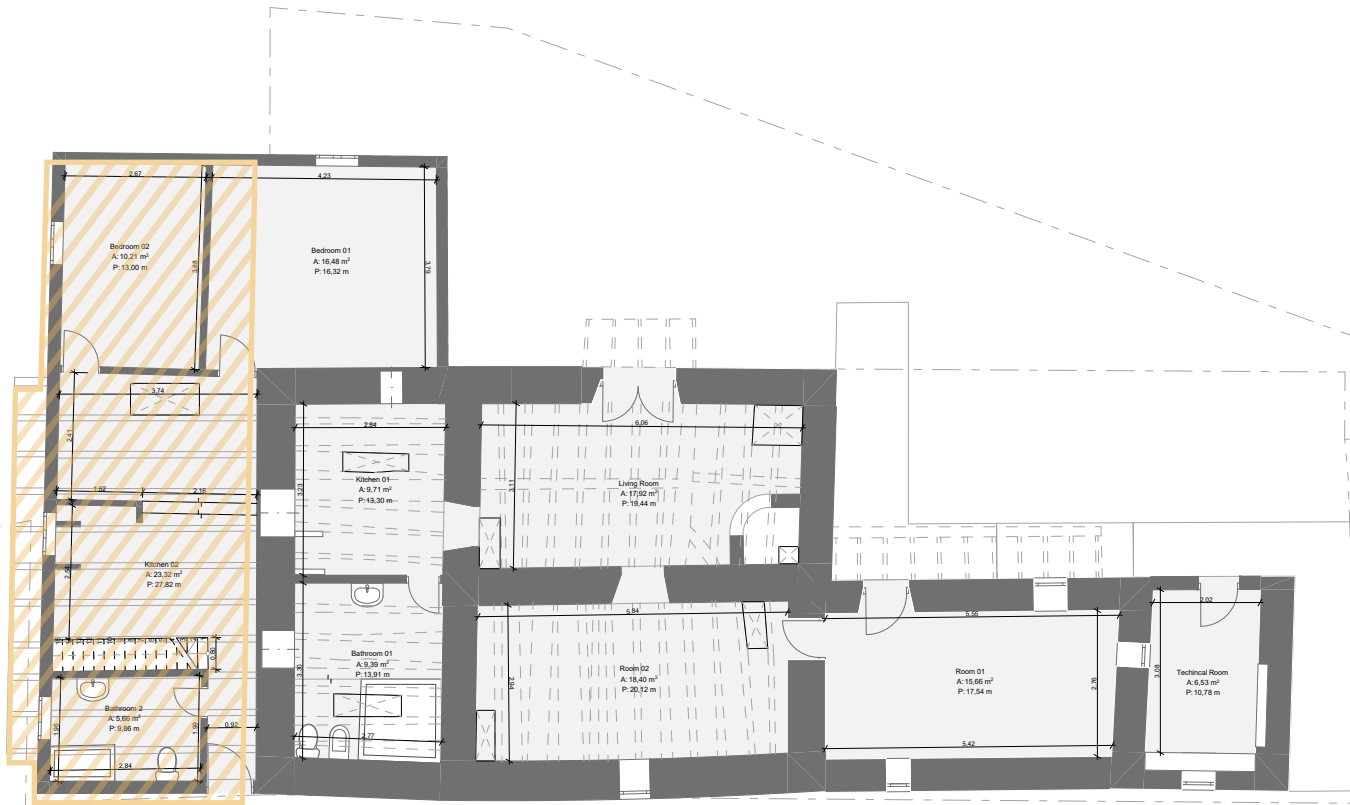
Situation [existing]

CAN ROMI

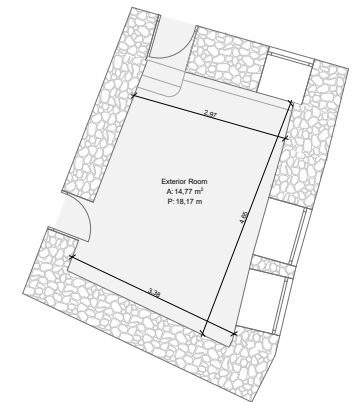


Groundfloor

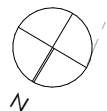
CAN ROMI

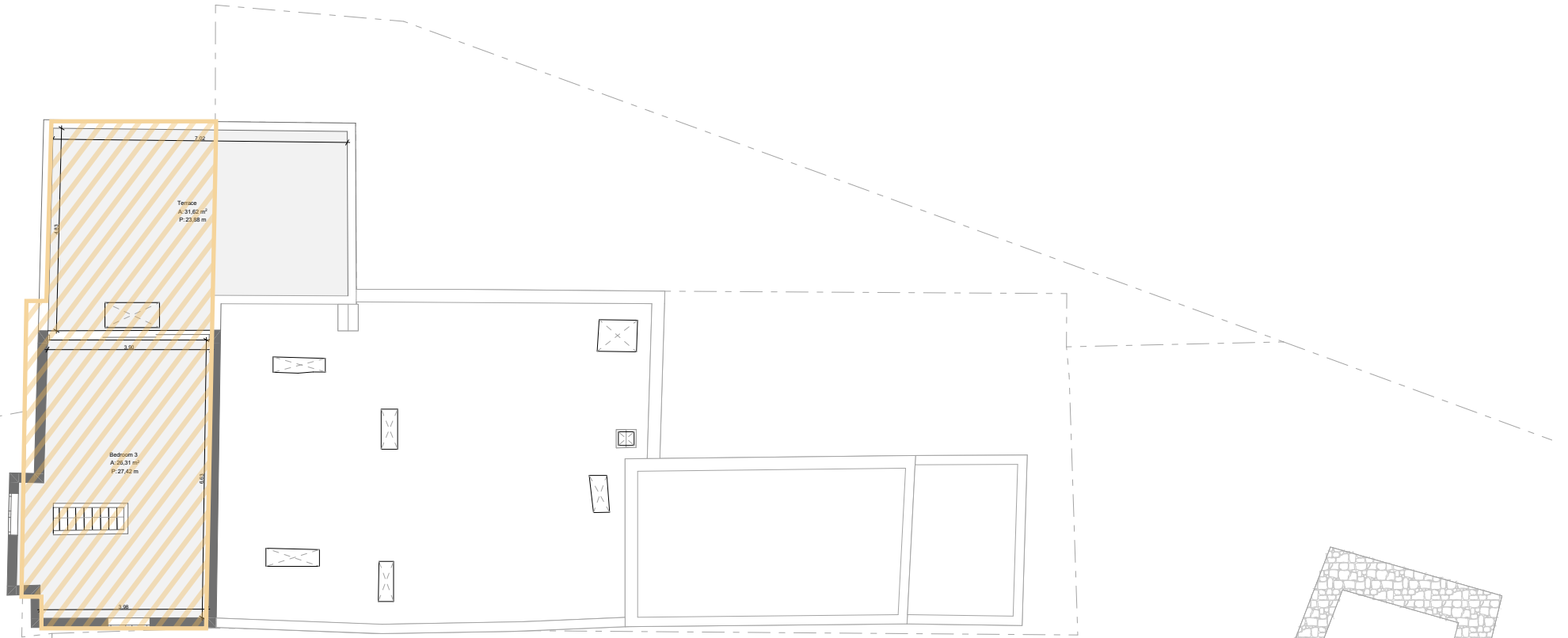


Surface to be removed

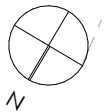
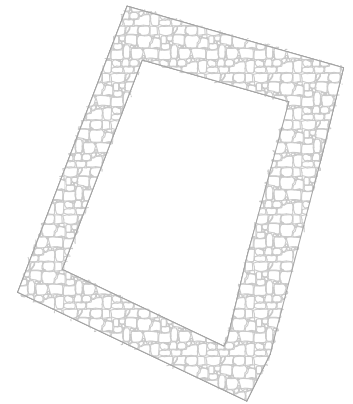


Ground Floor
Esc 1 100



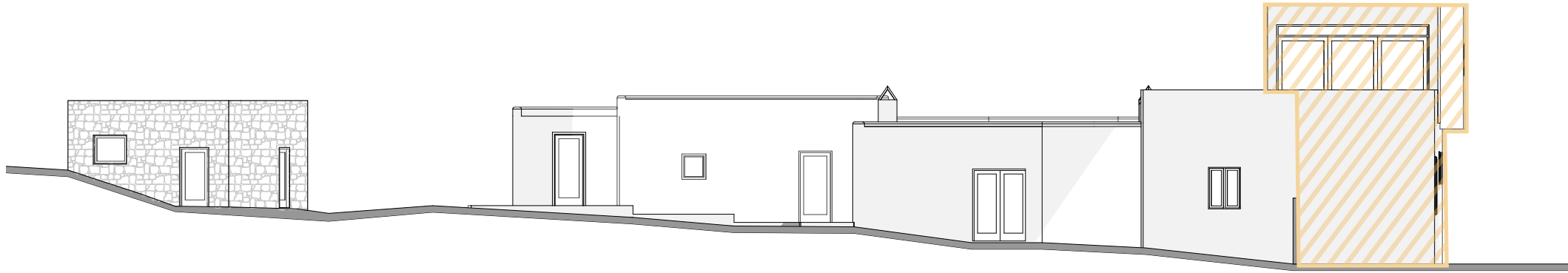


Surface to be removed

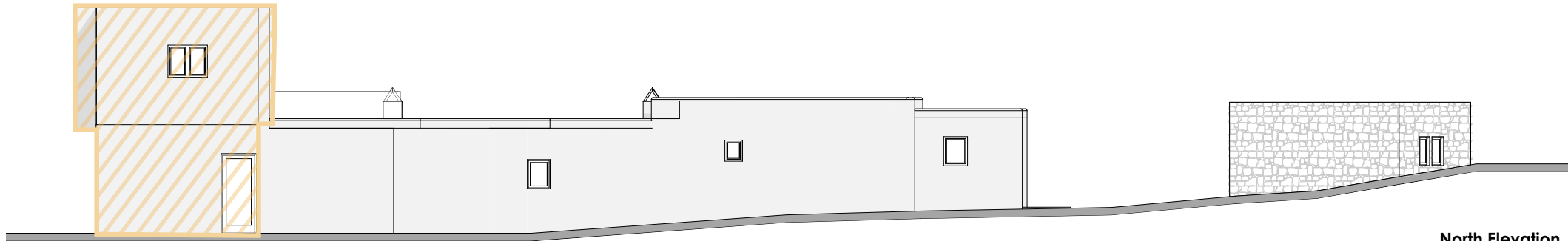


Elevations

CAN ROMI



South Elevation
Esc 1 100

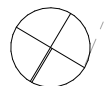


North Elevation
Esc 1 100

Ground Floor
Esc 1 100

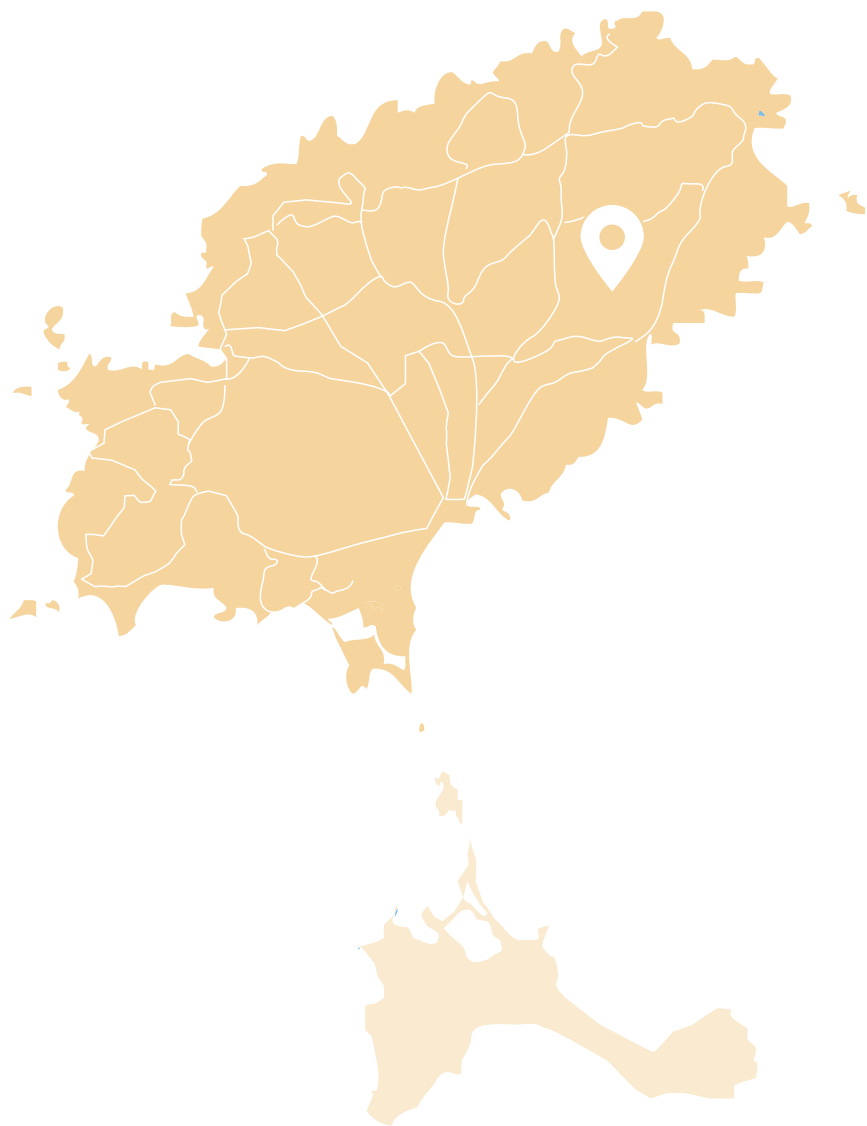


Surface to be removed



Can Romi

FACTSHEET



Location	San Carlos
View	Countryside
Finca	137.95 m2
Annex	28.31 m2
Plot	3.085 m2
Water	Cistern/water lorry
Electricity	Feni energy
Main house	3 Bedrooms 1 Bathrooms Living room Kitchen
Outdoors :	Annex Fertile land Terrace

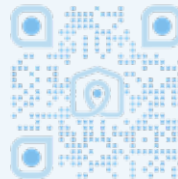




The Blue Pearl

CREATING LUXURY HOMES

PORTFOLIO ↗



Showroom Sta. Eulalia

Carrer del Sol, 1
07840 Santa Eulària des Riu,
Illes Balears

thebluepearl.es

+34 971 331 256
realestate@thebluepearl.es

The Blue Pearl House Flagship Store and Showroom

Ctra. Sant Josep, km 1.5
07817 Sant Josep de Sa Talaià
Illes Balears